

# The Nest



Where feeling home.. is feeling secure



**BIN FAQEEH**  
REAL ESTATE INVESTMENT  
COMPANY S.P.C.

Tel: +973 77144144 | Fax: +973 77155155

[www.binfaqeeh.com](http://www.binfaqeeh.com)

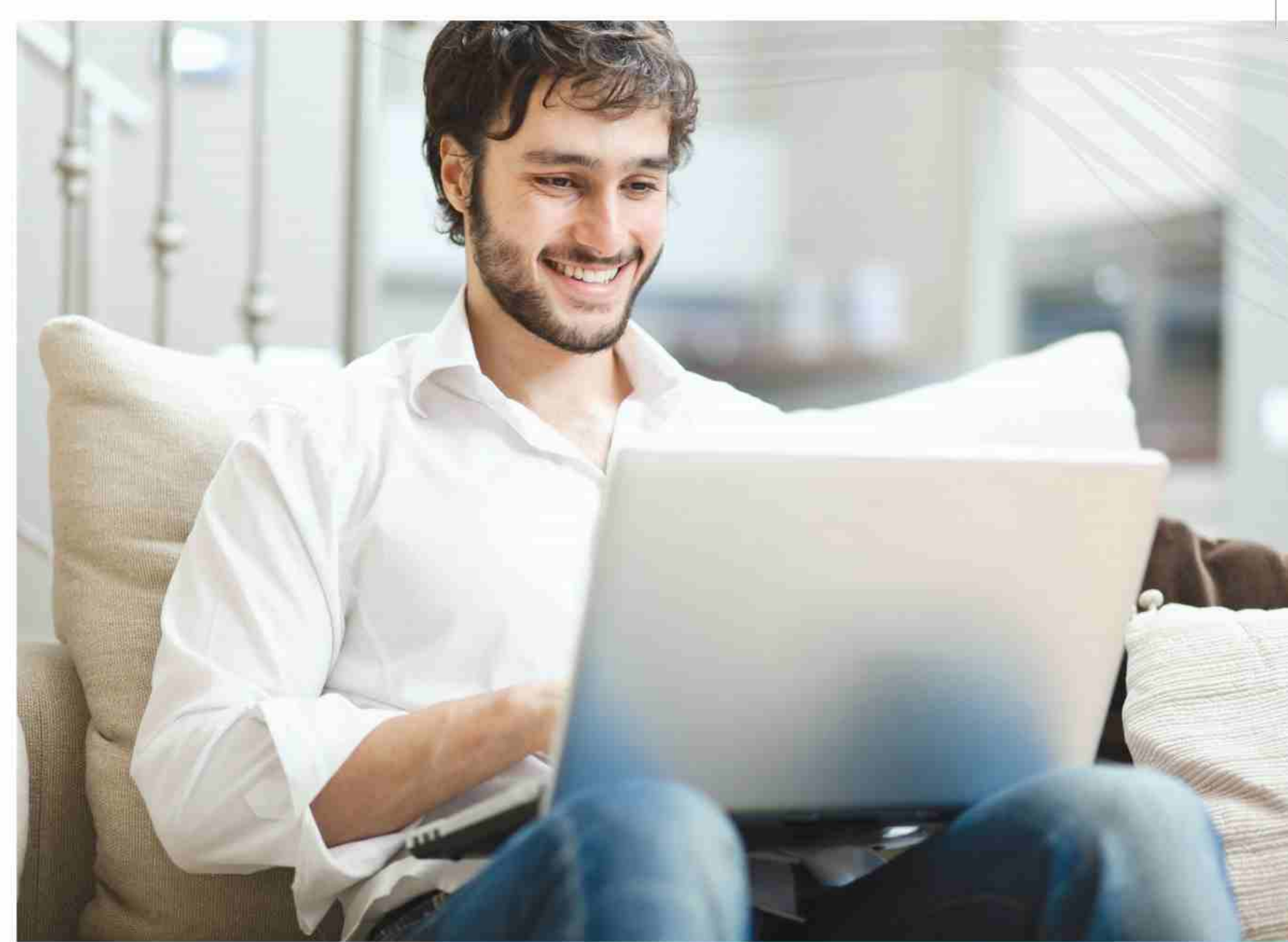
P.O. Box 20007, Manama  
Kingdom of Bahrain



@binfaqeeh\_co



*“The Nest  
is where  
we start  
from ”*



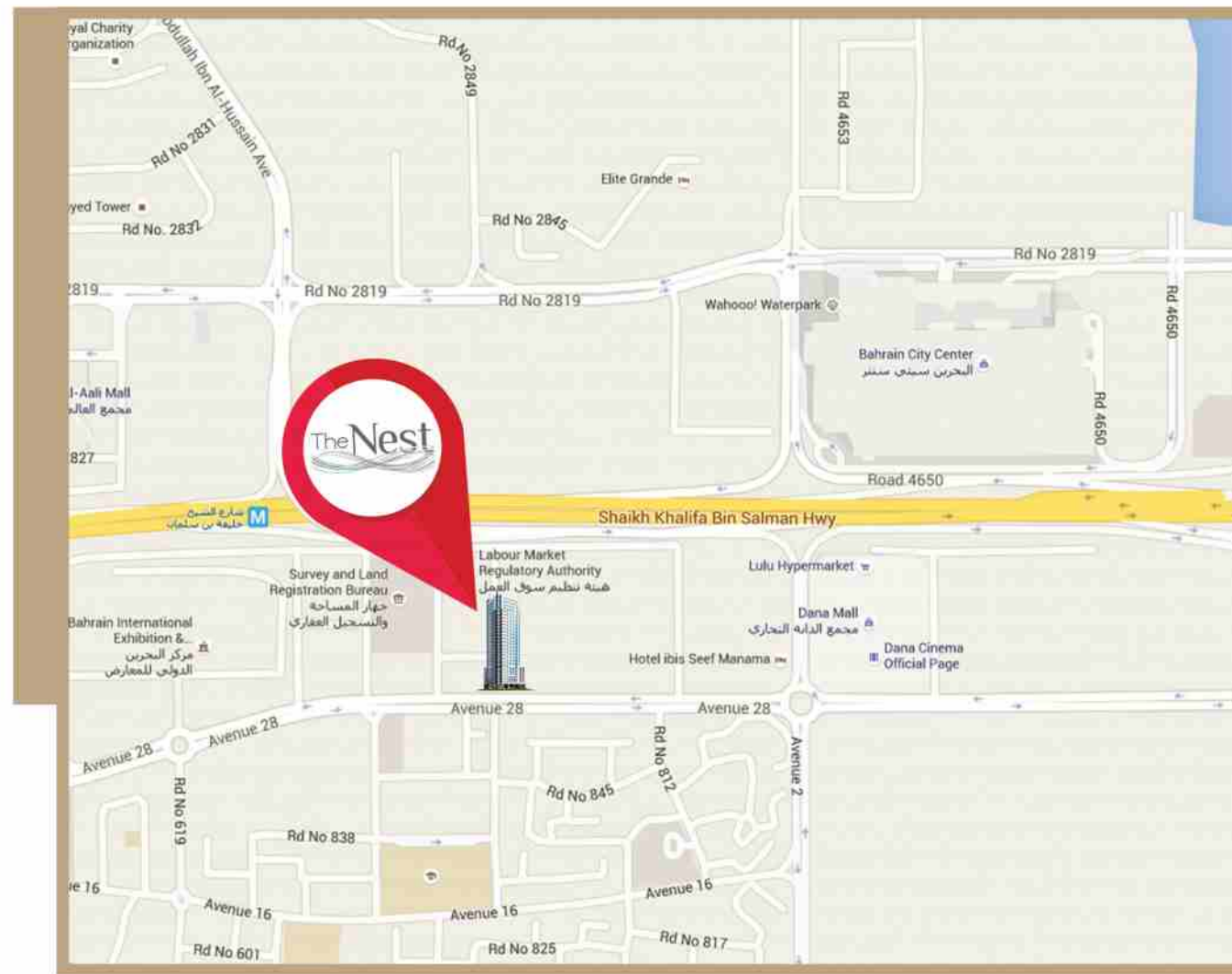
**Because home is a feeling, not a place..**

The Nest, precisely what you need to feel home and sheltered. As a true Nest, we persuaded that it provides the sense of safety & relaxation in addition to fulfilling that longing for warmth, believing that homes with souls always exudes an air of comfort regardless their size.

## Be at the heart of Manama

The Nest is a residential tower suitably located in Sanabis, a village in Manama, next to LMRA and Chamber of Commerce and Industry.

Providing Studio and one bed-room apartments with only minutes of drive to Bahrain's ultimate shopping, dining and entertainment centres while convenience shopping is available with 24-hour stores not to mention all-under-one-roof hypermarkets within reach and at your foot step.



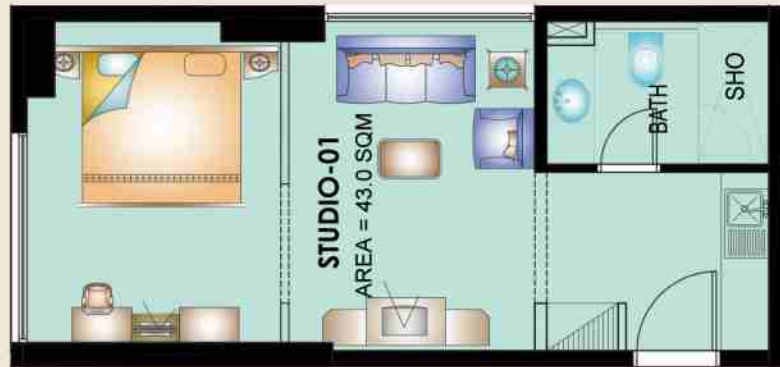
## The Nest features and highlights:

- Contemporary style architecture.
- 230 units available, in choice of one bedroom or studio.
- 12 dissimilar flat/Studio units.
- Swimming pool/Gymnasium open for residents.
- Top 24/7 security facilities.
- 1- Slot car parking per unit.
- Hospitable Reception area.

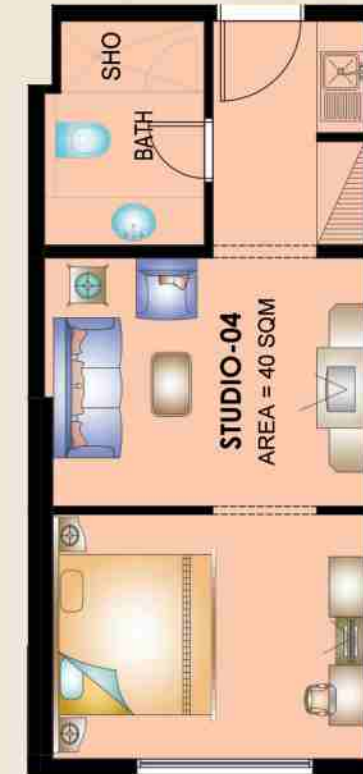


Being well nested among the Kingdom's busiest malls; **Bahrain City Centre, Seef Mall, Al Aali Complex** and **Dana Mall**, not to mention it's centralization in **Seef District area**, the Hub of the city that incubates most of the reputed firms in the Kingdom, The Nest is an ideal preference for students & new job joiners who seek efficiency apartment or a studio flat that are self-contained and secure.





Flat Type 1 | Area 43.00 SQM



Flat Type 4 | Area 40.00 SQM

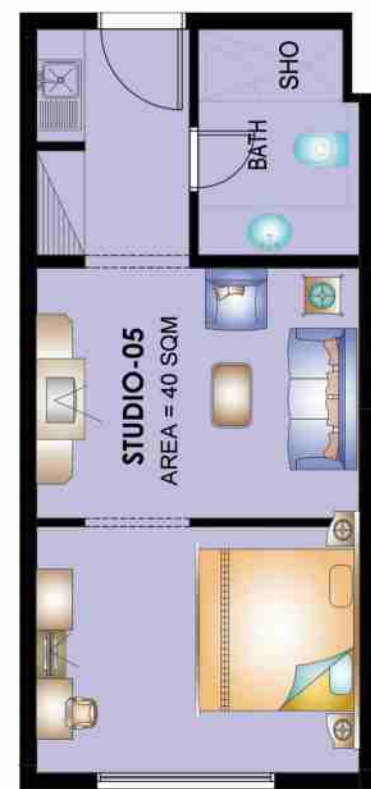


Flat Type 2 | Area 43.00 SQM

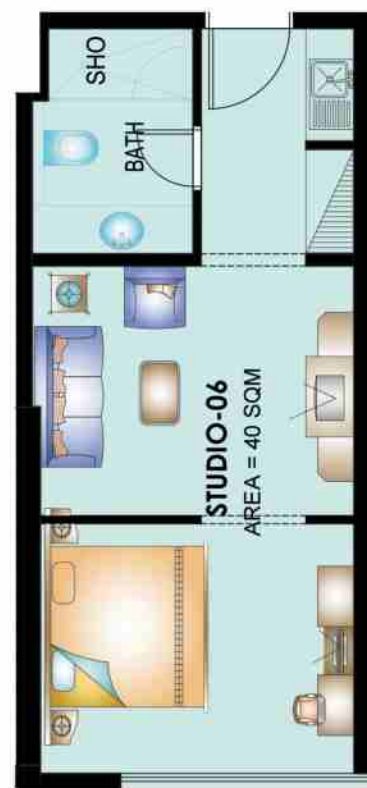


Flat Type 3 | Area 40.00 SQM

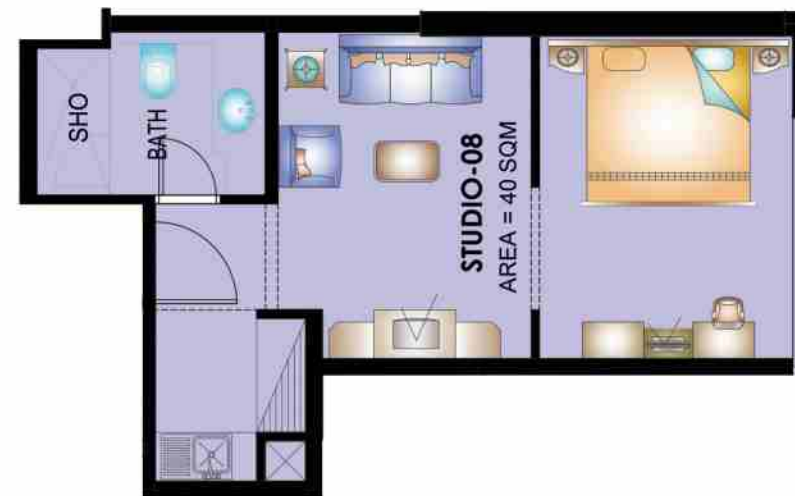




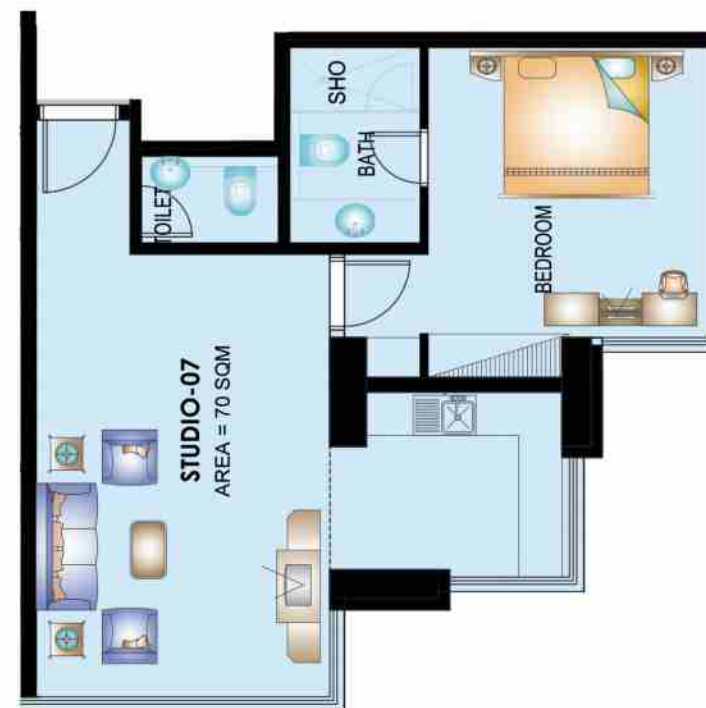
Flat Type 5 | Area 40.00 SQM



Flat Type 6 | Area 40.00 SQM



Flat Type 8 | Area 40.00 SQM

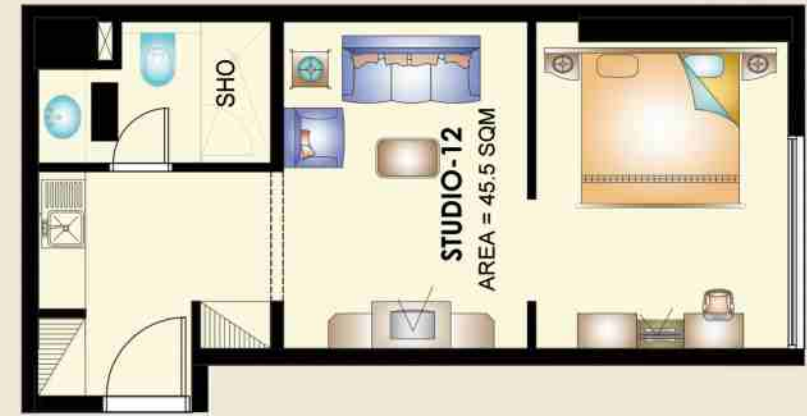
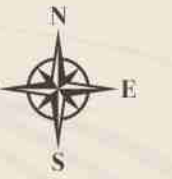


Flat Type 7 | Area 70.00 SQM





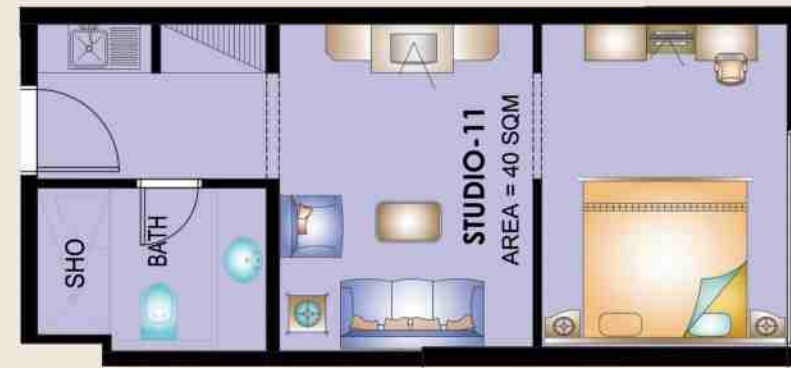
Flat Type 10 | Area 40.00 SQM



Flat Type 12 | Area 45.00 SQM



Flat Type 9 | Area 40.00 SQM



Flat Type 11 | Area 40.00 SQM

